



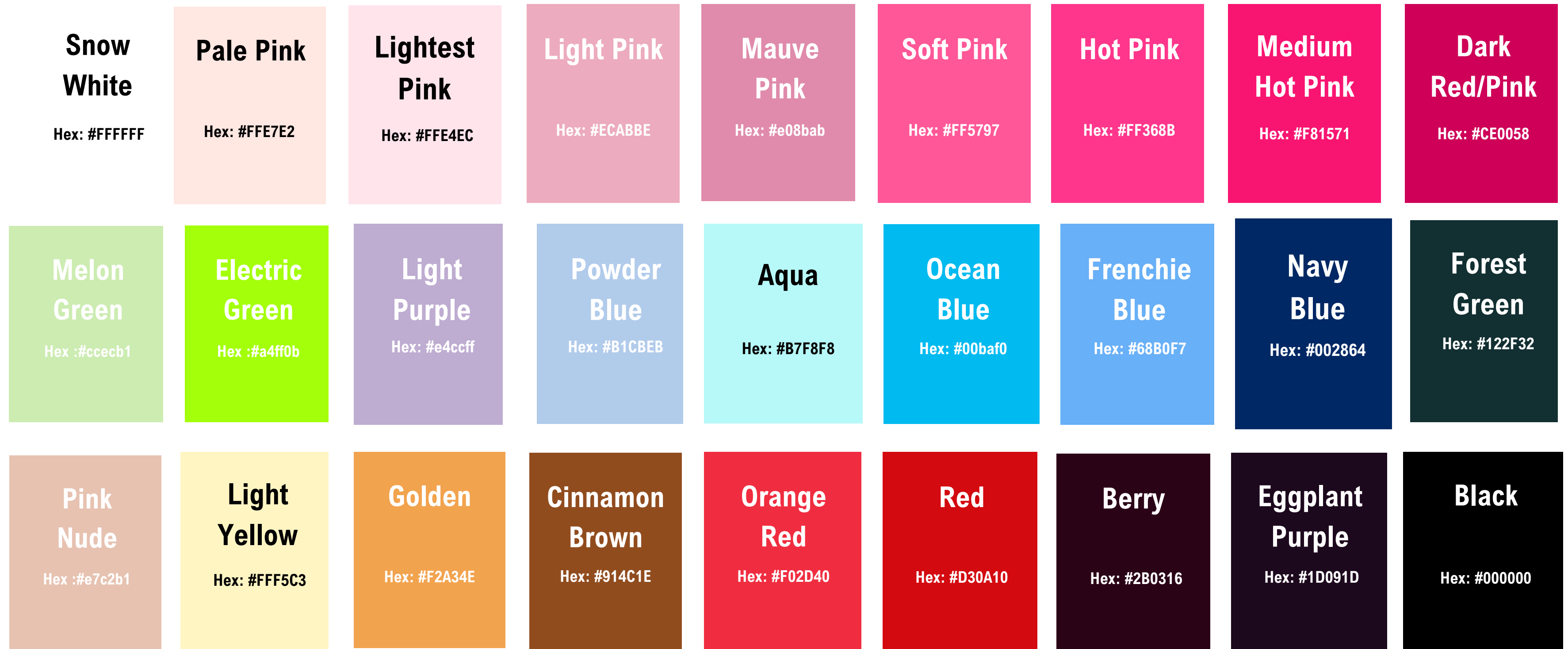
**LILLEE JEAN**  
PRODUCTIONS

*Lillee Jean Productions*

Brand Guidelines

# Primary

---



Lillee Jean Productions Logo image color swatches.

Lillee Jean Trueman website ([www.lilleejean.com](http://www.lilleejean.com) / [www.projectbullyish.com](http://www.projectbullyish.com)) brand colors.

Graphics palette used for social media profiles of Lillee Jean Trueman.

All color schemes created by Lillee Jean Trueman, color selection by Lillee Jean Trueman. Color themes by Lillee Jean Trueman.

# Primary Font

---

*Quotes Script*

*ABCDEFGHIJKLMNOPQRSTUVWXYZ12345678910@?!*

*Lillee Jean Productions Logo*

# Secondary Font

---

*Amsterdam Two*

*ABCDEFGHIJKLMNOPQRSTUVWXYZ12345678910@?!*

*Lillee Jean Productions Logo*

# Primary Font

---

Agrandir Narrow

ABCDEFGHIJKLMNOPQRSTUVWXYZ12345678910@?!

**ABCDEFGHIJKLMNOPQRSTUVWXYZ12345678910@?!**

*Lillee Jean Productions Logo*

# Secondary Font

---

Amsterdam Four

ABCDEFGHIJKLMNOPQRSTUVWXYZ12345678910@?!

*Lillee Jean Productions Logo*



# Primary Font

---

## Libre Baskerville

ABCDEFGHIJKLMNOPQRSTUVWXYZ12345678910@?!

ABCDEFGHIJKLMNOPQRSTUVWXYZ12345678  
910@?!

## Helvetica

ABCDEFGHIJKLMNOPQRSTUVWXYZ12345678910@?!

ABCDEFGHIJKLMNOPQRSTUVWXYZ12345678910@?!

*Lillee Jean Productions Website*

# Secondary Font

---

## Arial

ABCDEFGHIJKLMNOPQRSTUVWXYZ12345678910@?!

ABCDEFGHIJKLMNOPQRSTUVWXYZ12345678910@?!

*Lillee Jean Productions Website*

# Primary Font

---

Mr De Haviland

*Lillee Jean Productions Website*

# Secondary Font

---

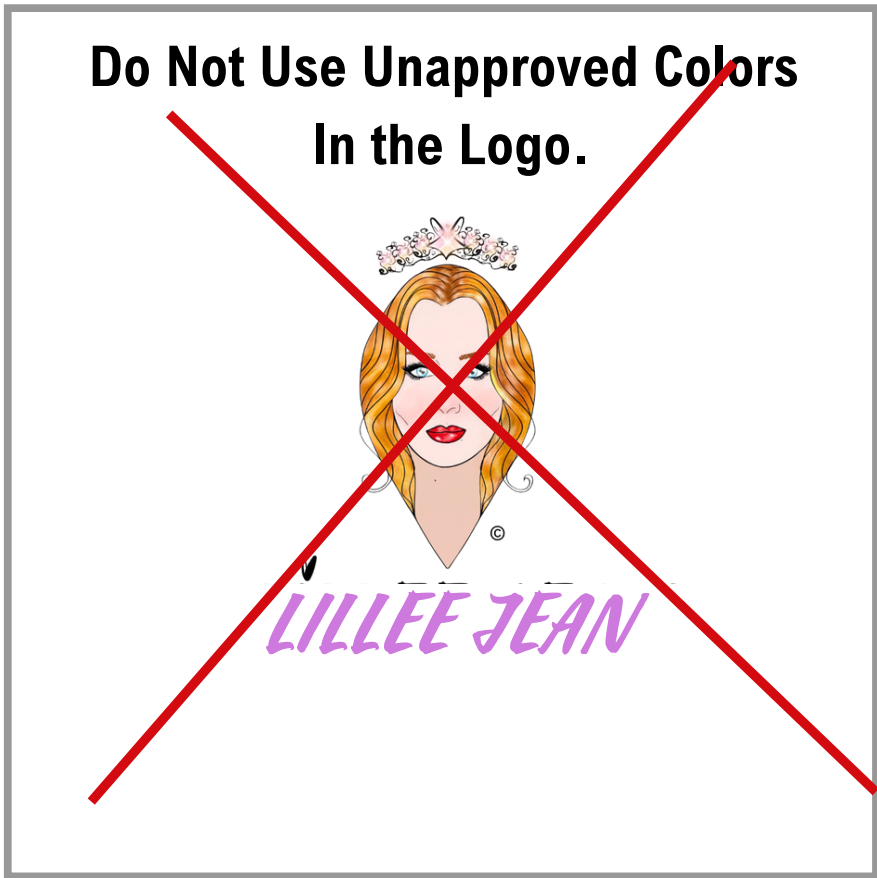
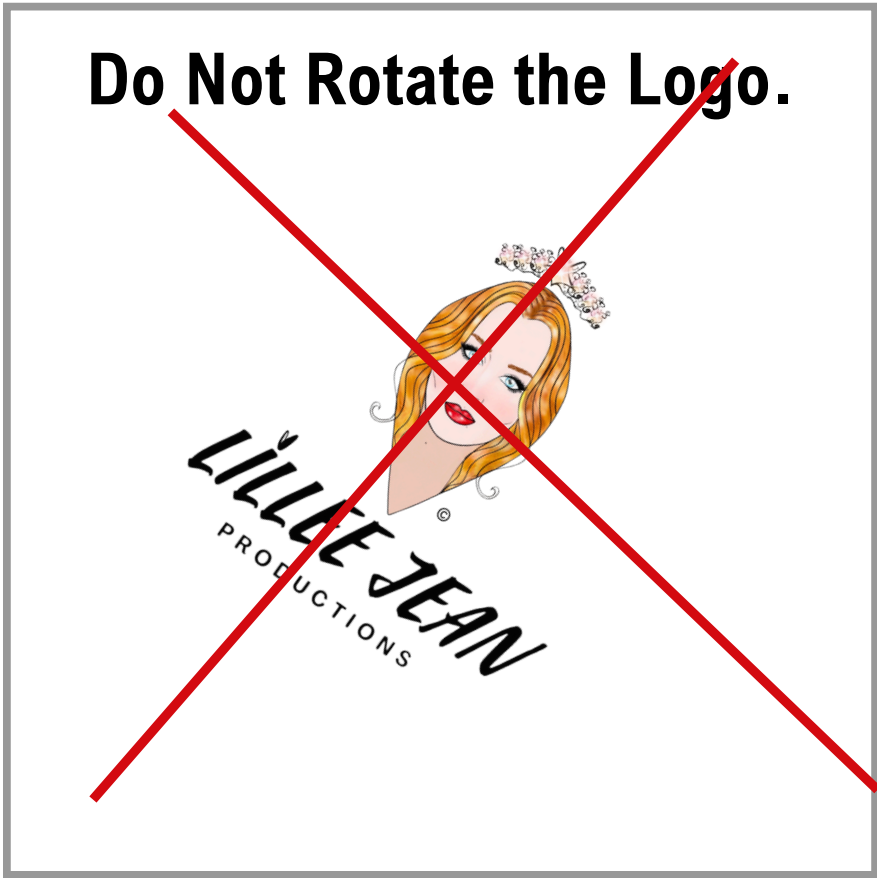
EB GARAMOND

ABCDEFGHIJKLMNOPQRSTUVWXYZ12345678910@?!

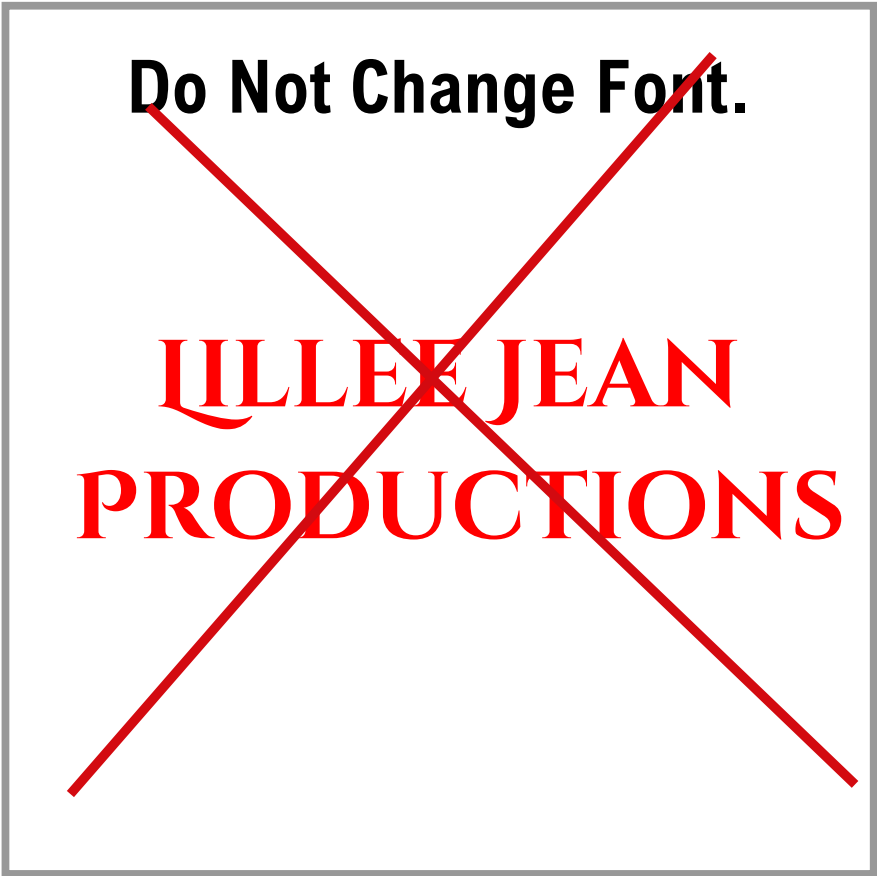
ABCDEFGHIJKLMNOPQRSTUVWXYZ12345678910@?!

*Lillee Jean Productions Website*

Sole ownership of illustrated logo, and accompanied “Lillee Jean” with a illustrated heart and “Productions” is Lillee Jean Trueman. No usage is authorized without written consent.

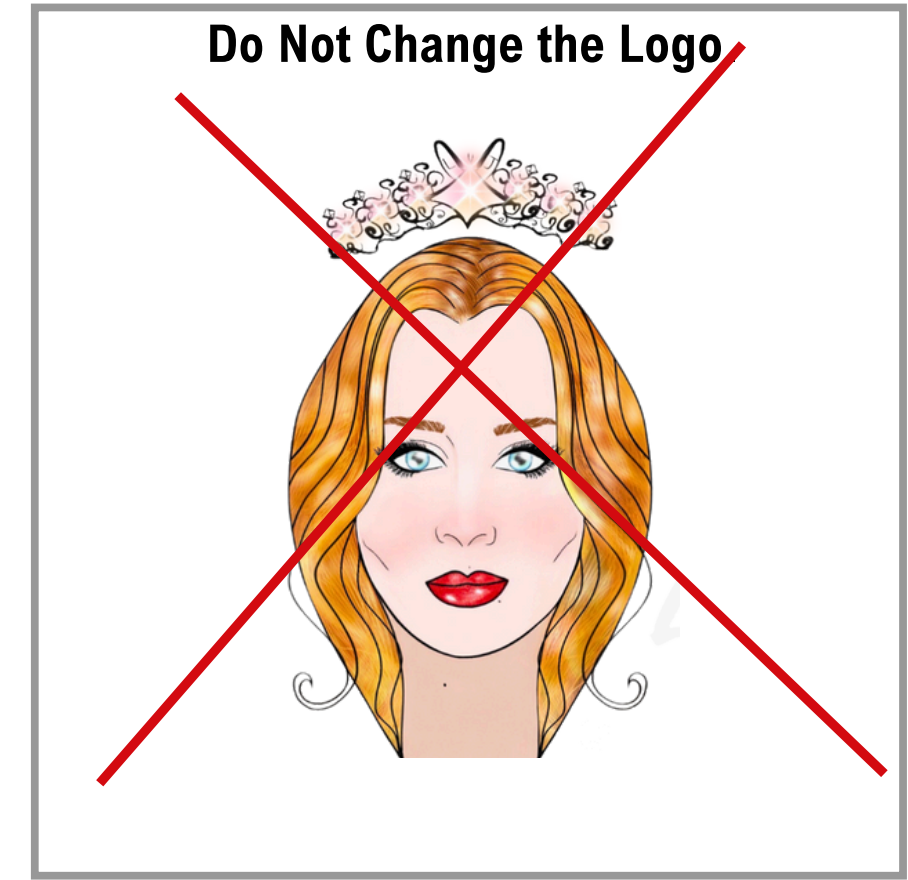


Sole ownership of illustrated logo, and accompanied “Lillee Jean” with a illustrated heart and “Productions” is Lillee Jean Trueman. No usage is authorized without written consent.





**Sole ownership of illustrated logo, and accompanied “Lillee Jean” with a illustrated heart and “Productions” is Lillee Jean Trueman. No usage is authorized without written consent.**



Sole ownership of illustrated logo, and accompanied “Lillee Jean” with a illustrated heart and “Productions” is Lillee Jean Trueman. No usage is authorized without written consent.

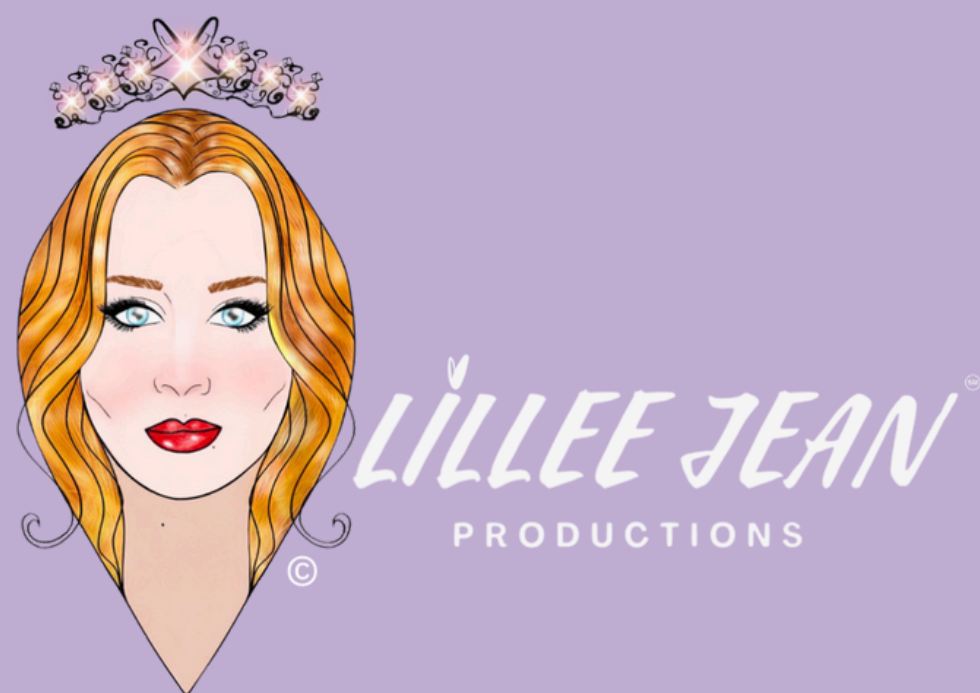


Sole ownership of illustrated logo, and accompanied “Lillee Jean” with a illustrated heart and “Productions” is Lillee Jean Trueman. No usage is authorized without written consent.



The cursive text "Lillee Jean" with a registered trademark symbol (®) at the end. The text is enclosed in a black rectangular frame.

Sole ownership of illustrated logo, and accompanied “Lillee Jean” with a illustrated heart and “Productions” is Lillee Jean Trueman. No usage is authorized without written consent.





Sole ownership of illustrated logo, and accompanied “Lillee Jean” with a illustrated heart and “Productions” is Lillee Jean Trueman. No usage is authorized without written consent.



Lillee Jean<sup>SM</sup>

Lillee Jean<sup>SM</sup>



Lillee Jean<sup>SM</sup>



Lillee Jean<sup>SM</sup>

Lillee Jean<sup>SM</sup>



Lillee Jean<sup>SM</sup>

Sole ownership of illustrated logo, and accompanied “Lillee Jean” with a illustrated heart and “Productions” is Lillee Jean Trueman. No usage is authorized without written consent.



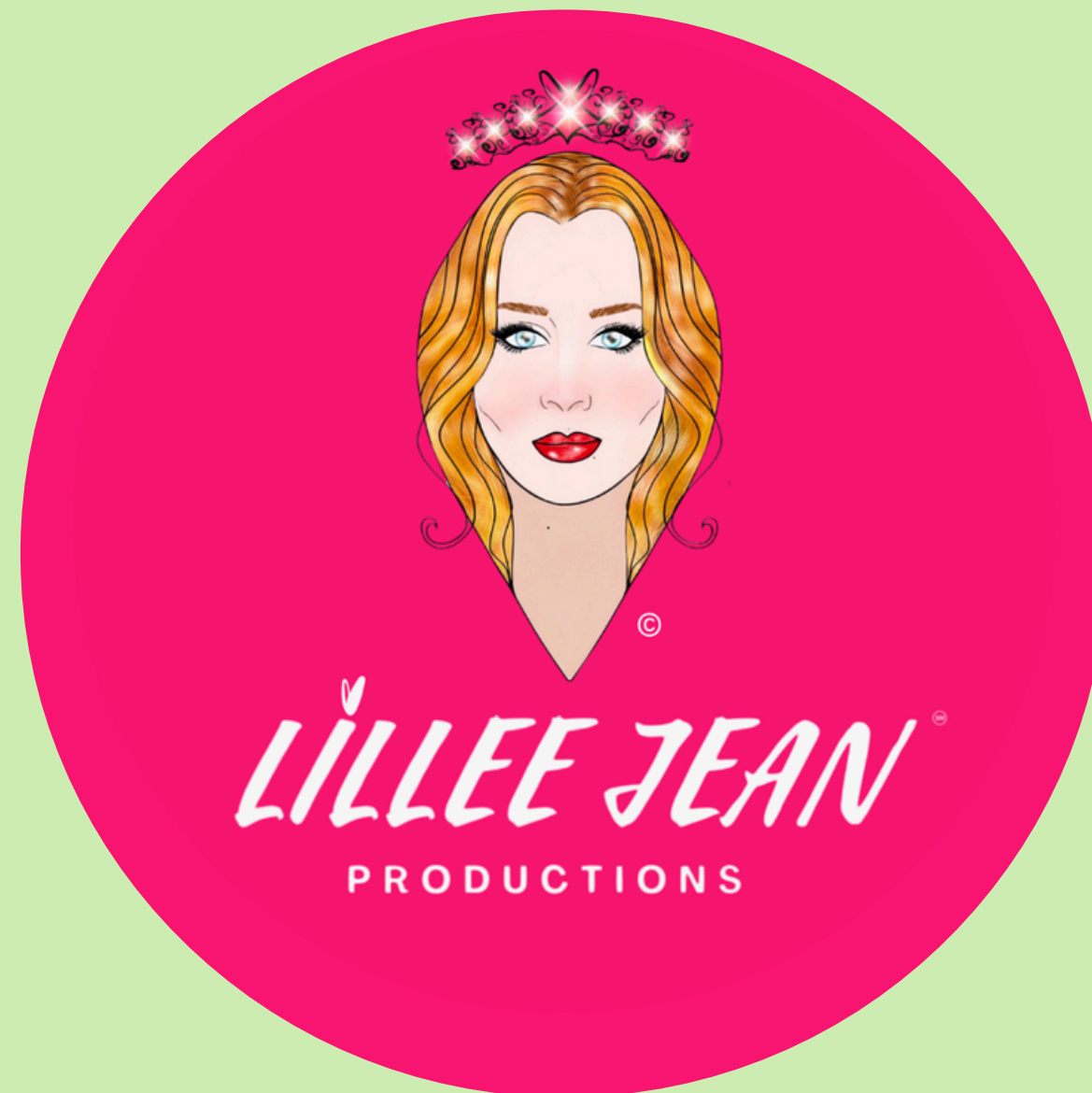
*LILLEE JEAN*<sup>®</sup>  
PRODUCTIONS



*LILLEE JEAN*<sup>®</sup>  
PRODUCTIONS



Sole ownership of illustrated logo, and accompanied “Lillee Jean” with a illustrated heart and “Productions” is Lillee Jean Trueman. No usage is authorized without written consent.



Lillee Jean  
beauty

Lillee Jean <sup>LIVE</sup>  
TALKS

LILLEE JEAN  
PRODUCTIONS

PROJECT  
Bullyish  
Lillee Jean

Lillee Jean  
TALKS LIVE  
A LILLEE JEAN PRODUCTION

Lillee Jean  
MIND OVER BEAUTE

Style  
Your  
Lillee  
VOYAGER  
With Lillee Jean

SO LILLO QUI?

Lillee Jean  
LILLEE JEAN  
PRODUCTIONS

In accordance with the copyright laws, any and all images appearing on the Lillee Jean website, [www.LilleeJean.com](http://www.LilleeJean.com), all social media pages associated with Lillee Jean, consisting of but not limited to Facebook, Twitter, Instagram, Pinterest, and YouTube, as well as any images photographed and captured are the exclusive property of Lillee Jean and are protected under the United States and International Copyright laws.

Copyright and ownership of images taken by Lillee Jean will always be retained by Lillee Jean Trueman (Lillee Jean). Unless given written authorization, the site user is forbidden by law from copying any images created by Lillee Jean Trueman (Lillee Jean). QUEEN LILLEE, and Lillee Jean Productions followed by a unique heart design, are using symbols of the branding associated with Lillee Jean Trueman and her logo and trademarks.

The images may not be reproduced, printed, copied, transmitted, or manipulated without the written permission of Lillee Jean Trueman (Lillee Jean). The use of any image as the basis for another photographic concept, illustration, or reproduction (digital, artist-rendered, or alike) is a violation of the law and is strictly prohibited.

Unless otherwise noted, the content of this site, [Www.LilleeJean.com](http://Www.LilleeJean.com), (text, audio, visual media, motion picture, and image) is copyrighted by Lillee Jean Trueman (Lillee Jean Beauty Inc.). All Rights Reserved, and protected under U.S. Copyright law. For more information about the Copyright Act, making copies, and locating a copyright owner, scroll down to the appropriate section.

Several pieces are registered with the U.S. Copyright Office and can be searched accordingly. All rights are reserved.

Main Catalog: Sole ownership of illustrated logo, and accompanied “Lillee Jean” with a illustrated heart and “Productions” is Lillee Jean Trueman. No usage is authorized without written consent.

Catalog 1: Sole ownership of illustrated logo, and accompanied “Lillee Jean” with a illustrated heart and “Productions” is Lillee Jean Trueman. No usage is authorized without written consent.

Catalog 2: Sole ownership of illustrated logo, and accompanied “Lillee Jean” with a illustrated heart and “Productions” is Lillee Jean Trueman. No usage is authorized without written consent.

- - 
  - 
  - 
  - 
  - 
  - 
  -
- EXAMPLE WORKS
- Purple Space Chick. -Registration Number: VA0002323197
- Holiday Angel Elf. - Registration Number: VA0002322467
- Timeless But Forward. - Registration Number: VA0002319224
- Lillee Jean 2019. - Registration Number: VA0002322490
- Queen Lillee - Registration Number: VA0002426898
- Claimant FOR ALL: Lillee Jean Trueman.

The Lillee Jean "Queen Lillee" logo, and "Lillee Jean Productions" logo are the primary means of identifying our company, and should never be recreated or otherwise manipulated. This is essential to maintain a consistent presentation of our identity. Sole ownership of the illustrated logo, and accompanied “Lillee Jean” with an illustrated heart and “Productions” is Lillee Jean Trueman. A service mark is had on the right side of the words "LILLEE JEAN". Several images, colors, and fonts used distinctly by Lillee Jean Trueman, and all brands including but not limited to Lillee Jean Productions, can be found in our Brand Kit. No usage is authorized. Please read our [Copyright Policy](#) to learn more. Several illustrations are registered with the Library of Congress. (Press Kit, Brand Kit, and Logo Kit design and concept by Lillee Jean Trueman. All rights reserved for all concepts, design, visual, and media.) Authorship on Application:

Lillee Jean Trueman, 2001- ; Domicile: United States; Citizenship: United States. Authorship: 2-D artwork.

Rights and Permissions: Lillee Jean Trueman, Lillee Jean Beauty Inc., p.o. box 640033, 21271 26TH AVE, Bayside, NY, 11360, United States, [hello@lilleejean.com](mailto:hello@lilleejean.com)

*Lillee Jean Productions*

# Brand Guidelines

*Kit created by Lillee Jean Trueman.*